

# Assembly Instructions for the Ramp of Two Bike Rack

## Precautionary and Maintenance Information:

**Caution: There are sharp edges. Wear gloves during assembly so as not to harm yourself**

There is always some flex in metal. Because of this you should check and tighten bolts before each use.

## Liability Information

CycleSimplex, LLC's liability from all causes is limited to the purchase price of the trike or bike rack.

## Warranty Information

These ramps may be returned unused for any reason by the purchaser to CycleSimplex, LLC within 15 days of its receipt by the purchaser. For full refund, returns must be packaged so that no damage occurs to the rack in shipment and the trike or bike rack is received by CycleSimplex in like new condition. If the rack arrives damaged the cost of repairing the damage may be deducted from the refund.

CycleSimplex, LLC warrants the ramps from defects in material or workmanship for 90 days from the date the purchaser receives the product. During that 90 day period, CycleSimplex, LLC will at its sole discretion either replace defective components or refund the full purchase price of the trike or bike rack upon return of the trike or bike rack in like new condition.

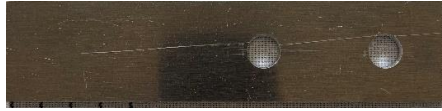
## Material List

<b>Material List Two Bike Ramp</b>		
<b>Item Name/Num</b>	<b>Description</b>	<b>Qty</b>
<b>V7.0 VTray Bike or Trike Ramp VT04</b>	<b>V-Tray for Bike and Trike Ramp 48" Long with 2 Holes, 1" from End, VT04</b>	<b>1</b>
<b>V7.0 Bike Ramp Tab RT02</b>	<b>Ramp Tab for the Bike Ramp, 1.25" x 5.5" x 1/8" Thick with 2 Holes, RT02</b>	<b>1</b>
<b>Hex Head Grade 8: 3/8"-16 x 1"</b>	<b>Hex Head Grade 8 Armor Coat (Gray) 3/8"-16 x 1"</b>	<b>2</b>
<b>Nut 3/8-16 Stainless Steel Self-Lock</b>	<b>Nut 3/8"-16 Stainless Steel Self-Lock</b>	<b>2</b>

## Pictures of Materials



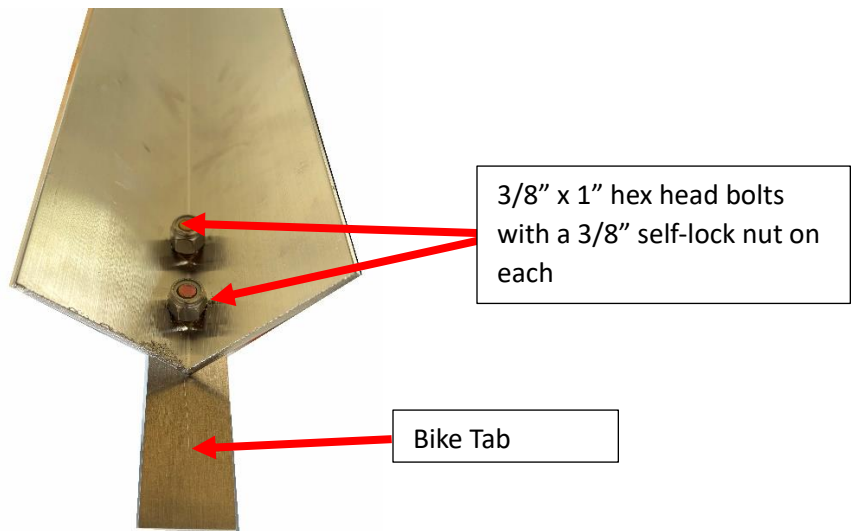
Ramp V-Trays



Bike Tab

**NOTE:** The bolts may be a different color

**Step 1:** Assemble the bike ramp. You will have 1 of this ramp.



**Step 2: Bend the Bike Tab.**

Slide the Bike Tab under the Flat Bracket where the arrow is pointing and bend the Bike Tab as the second picture below shows.



**This what the Bike Tab should like after it is bent**

