

# Assembly Instructions for the Ramps of One Trike Plus One Bike or One Trike

## Precautionary and Maintenance Information:

**Caution: There are sharp edges. Wear gloves during assembly so as not to harm yourself**

There is always some flex in metal. Because of this you should check and tighten bolts before each use.

## Liability Information

CycleSimplex, LLC's liability from all causes is limited to the purchase price of the trike or bike rack.

## Warranty Information

These ramps may be returned unused for any reason by the purchaser to CycleSimplex, LLC within 15 days of its receipt by the purchaser. For full refund, returns must be packaged so that no damage occurs to the rack in shipment and the trike or bike rack is received by CycleSimplex in like new condition. If the rack arrives damaged the cost of repairing the damage may be deducted from the refund.

CycleSimplex, LLC warrants the ramps from defects in material or workmanship for 90 days from the date the purchaser receives the product. During that 90 day period, CycleSimplex, LLC will at its sole discretion either replace defective components or refund the full purchase price of the trike or bike rack upon return of the trike or bike rack in like new condition.

## Material List

<b>Ramp One Trike or One Trike Plus One Bike – V7.0</b>		
Item Name/Num	Description	Qty
V7.0 VTray Bike and Trike Ramp VT04	V-Tray for Bike and Trike Ramp 48" Long with 2 Holes, 1" from End, VT04	3
V7.0 Bike Ramp Tab RT02	Ramp Tab for the Bike Ramp, 1.25" x 5.5" x 1/8" Thick with 2 Holes, RT02	1
V7.0 Trike Ramp Tab RT01	Ramp Tab for the Trike Ramp, 1.25" x 4.5" x 1/8" Thick with 3 Holes, RT01	2
Hex Head Grade 8: 3/8"-16 x 1 "	Hex Head Grade 8: 3/8" x 1" Amour Coat (Gray)	6
Nut 3/8-16 Stainless Steel Self-Lock	Nut 3/8"-16 Stainless Steel Self-Lock	6
Hex Head Grade 8: 1/4"-20 x 1"	Hex Head Grade 8: 1/4" x 1" Armor Coat (Gray)	2
Self-Lock Nut 1/4" Stainless Steel	Self-Lock Nut 1/4" Stainless Steel	2

## Pictures of Materials



Ramp V-Trays



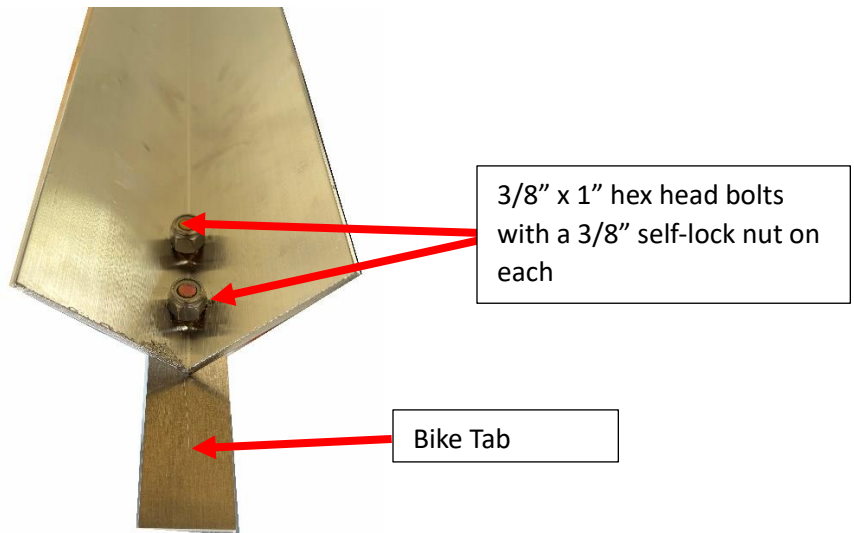
Trike Tab



Bike Tab

**NOTE: The bolts may be a different color**

**Step 1: Assemble the bike ramp or the single wheel on the trike ramp. You will have 1 of this ramp.**

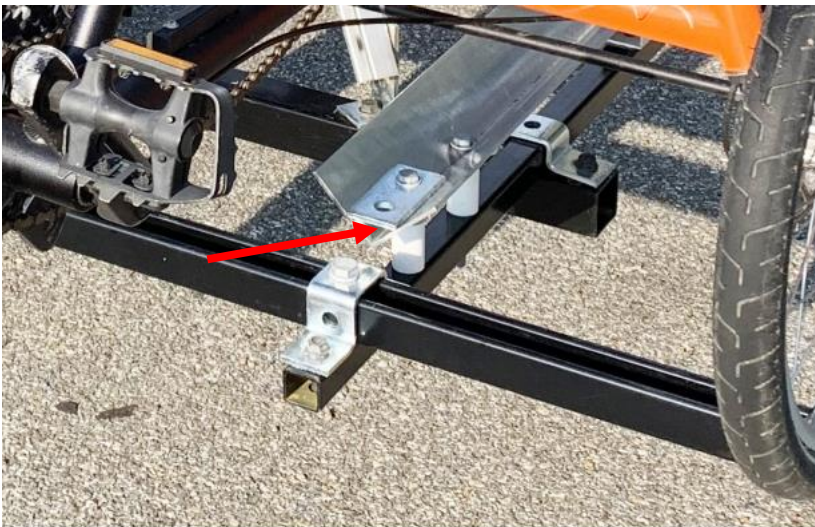


**Step 2: Bend the Bike Tab. If you have a One Trike Plus One Bike Rack, use 2A below. If you have a One Trike Rack, use 2B below**

Step 2A: Slide the Bike Tab under the Flat Bracket where the arrow is pointing and bend the Bike Tab as the third picture below shows.



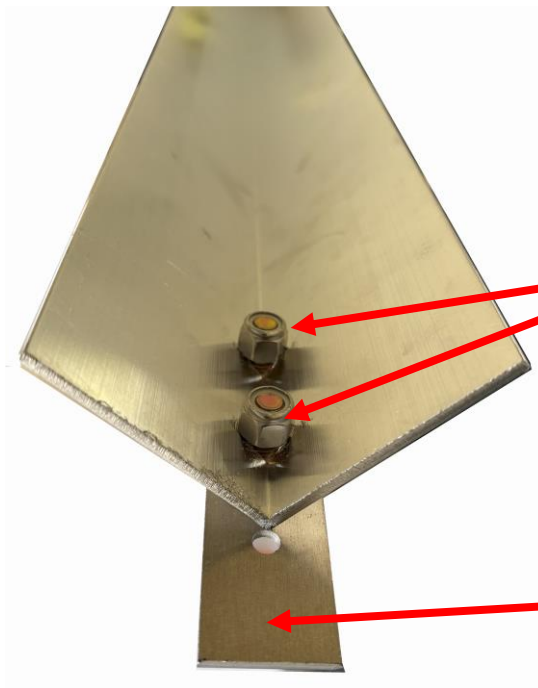
**Step 2B: Slide the Bike Tab under the Flat Bracket where the arrow is pointing and bend the Bike Tab as the second picture below shows.**



This what the Bike Tab should like after it is bent



Step 3: Assemble the dual wheels trike ramps (two of them)

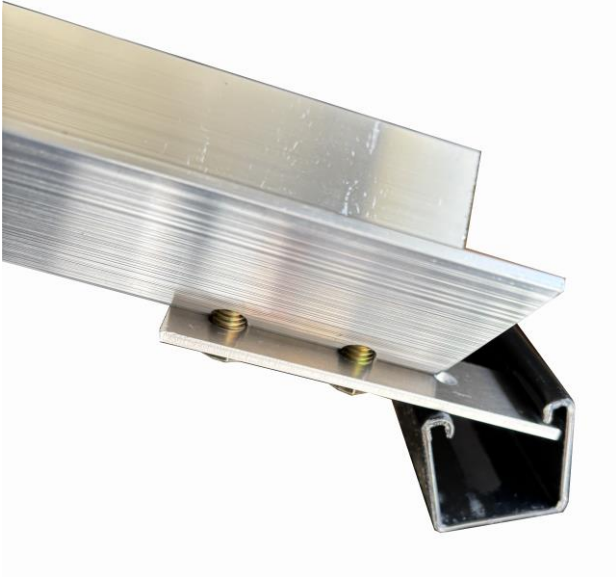


3/8" x 1" hex head bolts  
with a 3/8" self-lock nut on  
each

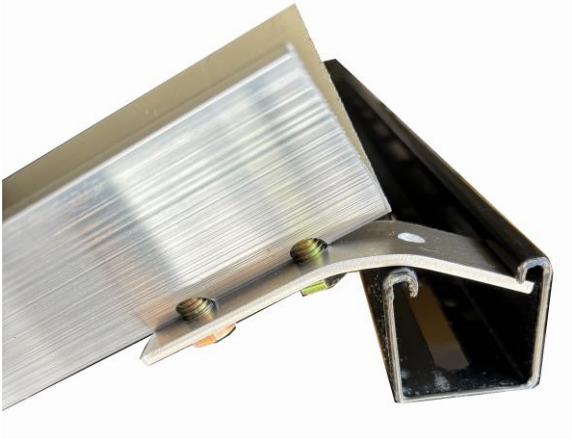
Trike Tab

Step 4: Bend the Trike Tabs

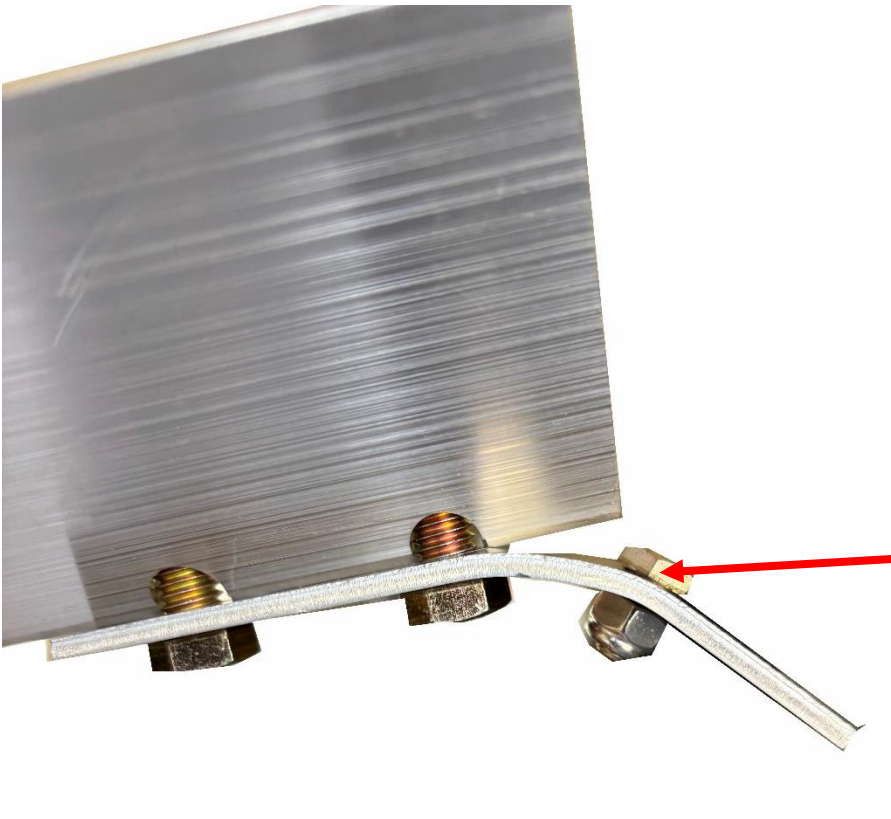
Insert the Trike Tab into the Trike Crossbar as shown below and bend the trike tab as in the second picture



This is what the Trike Tab should look like when it is bent



**Step 5: Insert the 1/4" x 1/2" hex head bolt into the Trike Tabs**



1/4" x 1/2" Hex Head Bolt with a self-lock nut on the end of the bolt